

C&L Aerospace|Aircraft Specifications

A/C Model: DHC-8-102

A/C Serial Number:	014	Number of Seats:	36
Date of Build:	1985	Avionics:	King
A/C Total Time:	59800.3 Hours	Country of Registration:	Australia
A/C Total Cycles:	56423 Cycles	Registration Number:	VH-QQF
Information as of Apr. 30, 2019		Aircraft Location:	Australia



L/H Engine	PW120A
Serial Number	TM-120920
Total Time	33301.3
Total Cycles	44150
Time Since Last Service	-
First Limiter (Cycles)	6715

R/H Engine	PW120A
Serial Number	TM-120350
Total Time	41924.4
Total Cycles	52467
Time Since Last Service	-
First Limiter (Cycles)	7869

APU: GTCP36-150W	
Serial Number	P-405
Current Hours:	7064.3
Current Cycles:	N/A

14SF-7 HAMILTON STANDARD PROPELLER			
L/H Propeller	Serial Number	Remaining	Month Due
Hub	2009101124	9785.5	Jun. 2025
Actuator	911019	3366.0	N/A
Blade #1	863791-7	8826.6	May 2024
Blade #2	853107	10331.0	Mar. 2026
Blade #3	885823-7	4427.7	Sep. 2019
Blade #4	890359-7	5756.9	Nov. 2019

14SF-7 HAMILTON STANDARD PROPELLER			
R/H Propeller	Serial Number	Remaining	Month Due
Hub	1032-7	6444.2	Feb. 2023
Actuator	20010515	7318.4	N/A
Blade #1	865583-7	6182.6	Nov. 2022
Blade #2	878605-5	8026.5	Feb 2024
Blade #3	854085	4178.9	Dec. 2019
Blade #4	859845	4131.1	Feb. 2020

C&L Aerospace|Aircraft Specifications

L/H Main Landing Gear	Serial Number	CSO	Cycles Remaining	Month Due
Shock Strut	DCL017/84	25280	4720	Jun. 2021
Drag Brace	DCL382/89	22599	7401	Nov. 2023

R/H Main Landing Gear	Serial Number	CSO	Cycles Remaining	Month Due
Shock Strut	DCL090/85	27995	2005	Apr. 2021
Drag Brace	DCL361/89	15065	14935	Jan. 2025

Nose Landing Gear	Serial Number	CSO	Cycles Remaining	Month Due
Shock Strut	DCL470/95	5834	24166	Apr. 2028
Drag Brace	DCL337/91	5119	24881	Jul. 2029

Inspection Status

C-Check	Last Performed	Time Remaining	Month Due
1C (5000 hrs. or 60 mos.)	59631.3	4831.0 Hours	Mar. 2024
2C (10,000 hrs. or 120 mos.)	54143.1	4221.7 Hours	Jan. 2024
3C (15,000 hrs. or 180 mos.)	45133.3	211.9 Hours	Oct. 2022
4C (20,000 hrs. or 180 mos.)	45133.3	5211.9 Hours	Oct. 2022
6C (30,000 hrs. or 240 mos.)	45133.3	15211.9 Hours	Oct. 2027

Configuration

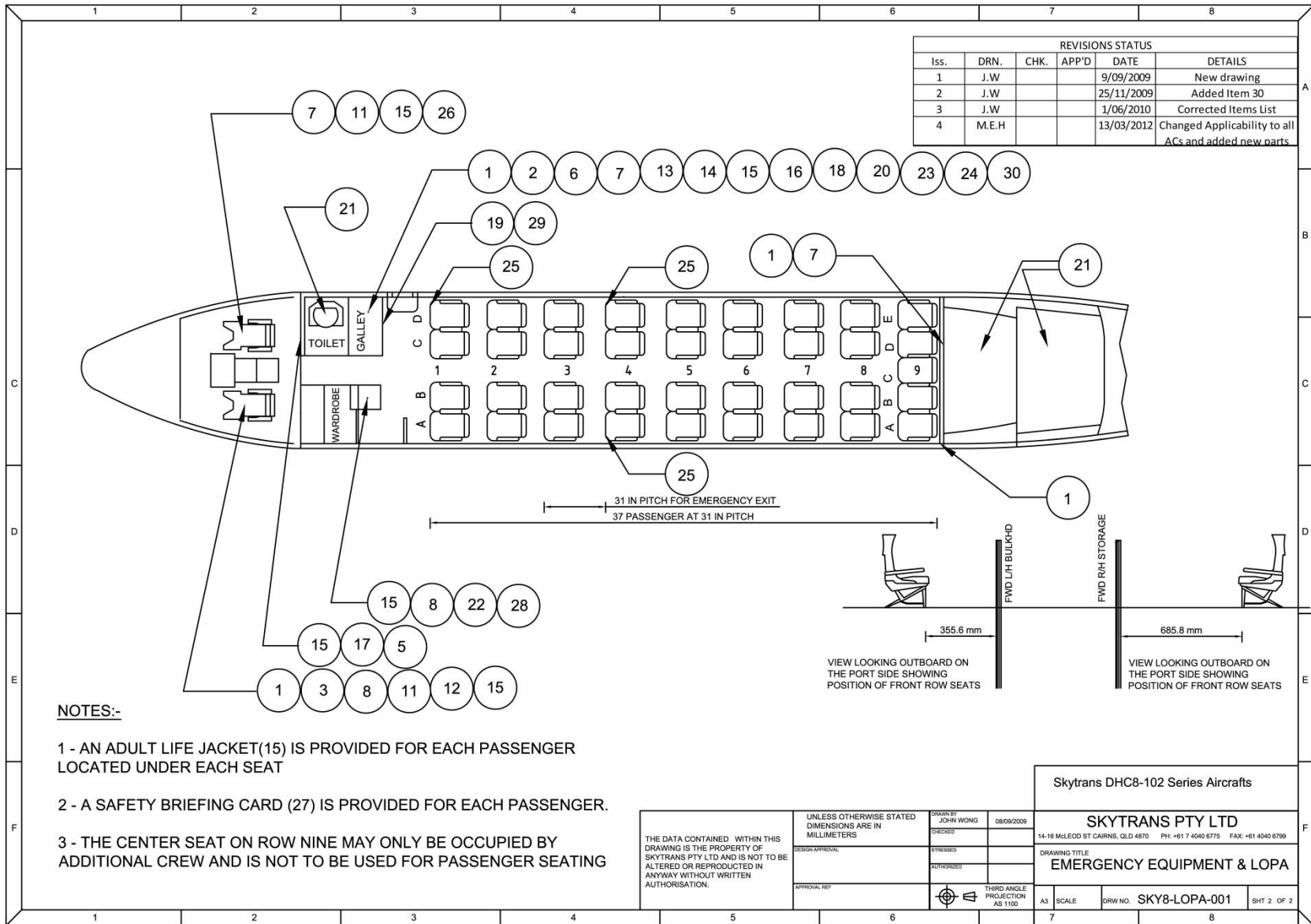
Number of Location of Galley	1 FWD
Number and Location of Lavatory	1 FWD
Number of Crew Seats	3 Cockpit, 1 Cabin
Aircraft Paint Scheme	Skytrans
TCAS	Yes

Operating Weight

Maximum Take-Off Weight	34,500 lbs
Maximum Landing Weight	33,900 lbs
Maximum Zero Fuel Weight	31,300 lbs
Basic Op. Empty Weight	23,113 lbs
Fuel Capacity	5,678 lbs

Avionics

Nomenclature	Manufacturer	Model	Qty
FMS	Universal	UNS-1Lw	1
VHF Comm.	King	KTR-908	2
VOR/ILS	Honeywell	KNR-634	2
DME	Honeywell	KDM-706A	2
TCAS-II Computer	Collins	TTR-920(+SB-R)	1
ATC (Mode S)	Collins	TDR-94D	2
Attitude Heading Computer	Honeywell	AH-600	2
FDAU	Teledyne	2228150-1-A	1
Passenger Address	Avtech	P.A.C.I.S.	1
DFDR	L3	2100-4043-00	1
CVR	L3	A200S	1
ADC	Honeywell	AZ-810	2
Radar Transceiver	Sperry	PRIMUS-800	1





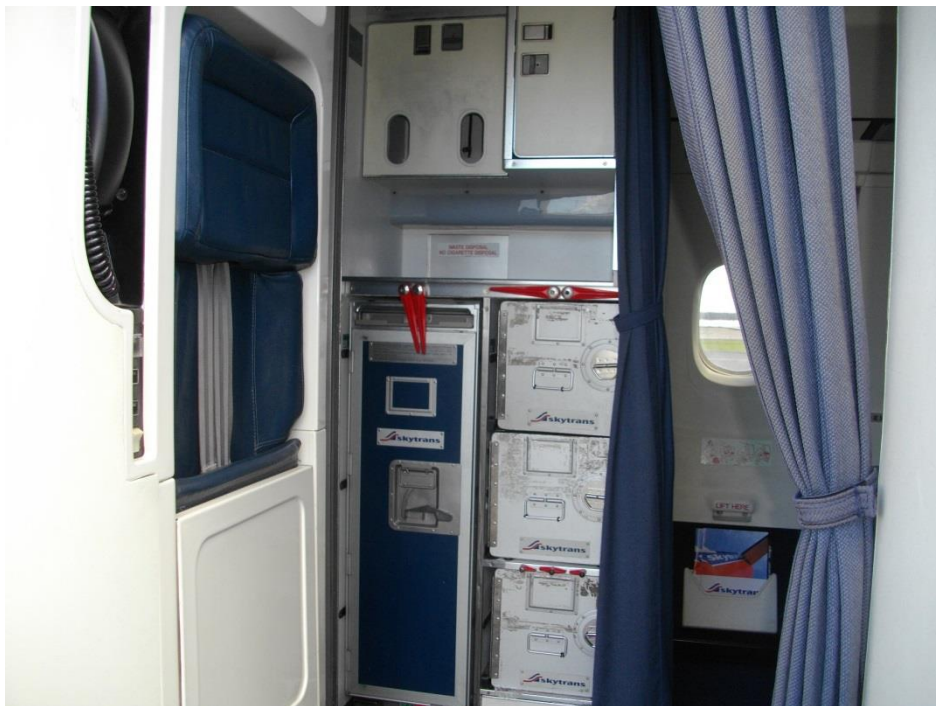
Aircraft Exterior



Flight compartment



Cabin facing Aft



Cabin facing Fwd

C&L Aerospace|Aircraft Specifications

Summary

This aircraft is currently in revenue service with a foreign operator and the 1C check has been freshly completed. The current lease was renewed in January 2019 for 3-years with a 2-year option.

Please contact the sender of this email or inquire at the below address for additional information.

Phone: +1 207 217 6050

www.cla.aero

www.claerospace.com

***Note:**

The information contained in this document has been provided by C&L Aerospace, LLC and is accurate to the best of their knowledge. C&L Aerospace, LLC is not liable for any errors which may be contained in this document. Parties interested in the products shown in this document are responsible for verifying the accuracy of all subject matter.