

C&L Aerospace | Aircraft Specifications

A/C Model: SAAB 340A

A/C Serial Number:	340A-132	Configuration:	Cargo
Date of Build:	1988	Avionics:	Collins
A/C Total Time:	43,141 Hours	Country of Registration:	Estonia
A/C Total Cycles:	48,746 Cycles	Registration Number:	ES-LSE
<small>*Information as of January 31, 2020</small>		Aircraft Location:	Estonia



L/H Engine	GE-E-367285
Total Time	37,123
Total Cycles	42,430
Time Since Last Service	2,581
First Limiter (Cycles)	4,510

R/H Engine	GE-E-367498
Total Time	38,378
Total Cycles	46,659
Time Since Last Service	2,377
First Limiter (Cycles)	4,773

<u>DOWTY PROPELLER</u>			
L/H Propeller	Serial Number	Remaining	Month Due
R389/4-123-F/26	DRG/4945/89	6,549	OH Due- Nov 2026
			5Y Due- Aug 2023

<u>DOWTY PROPELLER</u>			
R/H Propeller	Serial Number	Remaining	Month Due
R390/4-123-F/27	DRG/572/91	6,058	OH Due- Sep 2025
			5Y Due- Sep 2020

L/H Main Landing Gear	Serial Number	CSO	Cycles Remaining	Month Due
Shock Strut	LK8608266	5949	6051	Jan 2021
Drag Brace	LK8810583	2831	9169	Oct 2022

R/H Main Landing Gear	Serial Number	CSO	Cycles Remaining	Month Due
Shock Strut	LK8708089	2955	9045	Oct 2022
Drag Brace	LK8909078	2921	9079	Oct 2022

Nose Landing Gear	Serial Number	CSO	Cycles Remaining	Month Due
Shock Strut	LK8701219	8367	3633	Jan 2020
Drag Brace	LK8403125	1229	10771	Mar 2027

C&L Aerospace | Aircraft Specifications

Inspection Status

Hourly	Last Performed	Time Remaining
8000-Hour	42,091	6,950
4000-Hour	42,091	2,950
800-Hour	TBD	TBD
400-Hour	TBD	TBD

Cycles	Last Performed	Cycles Remaining
30000/12000-Cycle	37,118	372

Calendar	Last Performed	Date Due
4-Year/2-Year	February 2019	February 2021
6-Year/4-Year	November 2016	November 2020

Configuration

Class Breakout	-
Number of Location of Galley	-
Number and Location of Lavatory	-
Number of Crew Seats	-
Aircraft Paint Scheme	-
FAR 121 Complaint	-
ACAS	Yes
TAWS	Yes
FAR Part 36, Stage III Noise Compliant	No

Operating Weight

Maximum Take-Off Weight	28,000 lbs
Maximum Landing Weight	27,200 lbs
Maximum Zero Fuel Weight	25,700 lbs
Basic Op. Empty Weight	17,200 lbs
Fuel Capacity	5,690 lbs

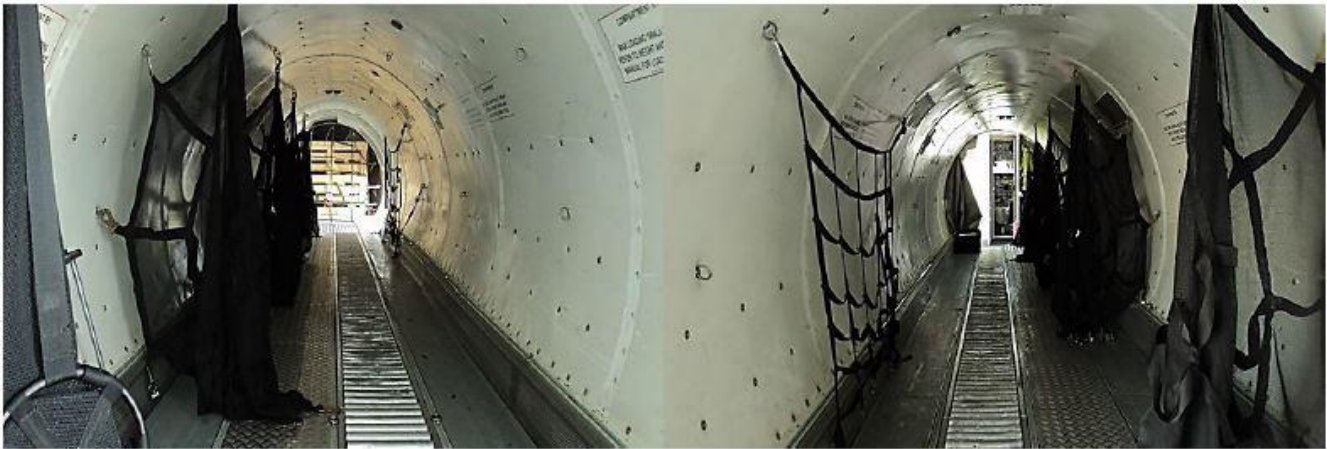
Note:

EASA compliant
 Cargo configuration
 Equipment installed:
 UNS-1K
 ACAS II (SW 7.1)

Representative photos



External View



Cabin facing Aft

Cabin facing Fwd

C&L Aerospace|Aircraft Specifications

Summary

This aircraft is currently in revenue cargo service with a foreign operator and is available for outright sale.

Please contact the sender of this email or inquire at the below address for additional information.

Phone: +1 207 217 6050

www.cla.aero

www.claerospace.com

***Note:**

The information contained in this document has been provided by C&L Aerospace, LLC and is accurate to the best of their knowledge. C&L Aerospace, LLC is not liable for any errors which may be contained in this document. Parties interested in the products shown in this document are responsible for verifying the accuracy of all subject matter.